



B U S I N E S S O F F E R

TO THE HEAD OF A MOTOR TRANSPORT COMPANY





DEAR PARTNER!

WELCOME TO RU-TRAVEL

Thousands of cities in Russia and abroad become closer in travel, business trips and trips around the world for our clients together with you. We specially carry out a thorough work to select the most reliable providers of transfer services and car rental services of different classes and brands, so that the path for our customers from a short trip to a distance of hundreds of kilometers is easy and affordable. We follow the most modern trends in the organization of transfer services, taking care of each client, whether it be a private transfer or the service of large corporations. Our team is a unique selection of specialists who are able to organize transfers or provide cars of any class and type for rent with a driver at almost any airport, train station and town.

WE INVITE TO COOPERATION

TRANSPORT COMPANIES
AND INDIVIDUALS

The face of our company is your competent professional drivers and coordinators in each specific city. It all depends on you and on your desire to work in the conditions of creating a good level of customer service for clients.



01

Safety and punctuality are fundamental to our business, and we pay a lot of attention to this. We conduct a careful selection of companies for the execution of road transport services, analyze the market and offer only the most reliable options for fulfilling orders. Everything that we do for our clients, we do with high quality and with reverent attention to every detail, which is the secret of our long-term success.

02

Cars of any classes and categories, reliable service providers, qualified personnel, well-organized logistics and workflow, systems and programs for automating business processes, all this works for customers even in a limited amount of time. We perfectly understand the specifics of transfer service and always set requirements for a high level of service to our partners.





A D V A N T A G E S

WHY IT IS WORTH WORKING WITH US

SEVERAL THOUSANDS OF TRANSFER AND CAR RENTAL ORDERS WE HANDLE OUR TRANSPORT PARTNERS WORLDWIDE.

JOIN AND YOU!



Stable flow of new orders for your company



All terms of cooperation and tariffs are fixed in the contract



Regular and guaranteed payments at least 2 times a month



A high degree of automation and a personal account for the convenience of working with us



24/7 support

IMPORTANT
CRITERIA

TERMS OF COOPERATION

To cooperate with us, you must have an LLC, individual entrepreneur or self-employed status.

Send us your organization details and current service rates. Or download and fill in the XLS file from the link and email it to 24@ru-travel.org.

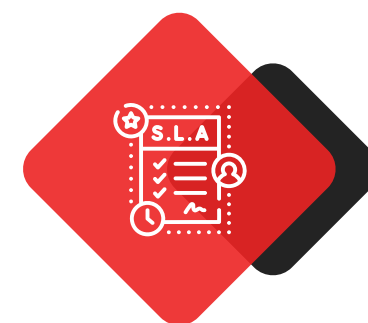
A supplier relations specialist will contact you after analyzing the offer and tariffs.



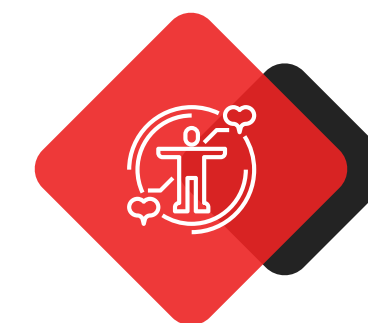
Providing round-the-clock communication by phone and email



Payment for services by bank transfer with payment 2 times a month upon completion of work



Compliance with quality standards for road transport services. Compliance with the regime of work and rest before the execution of orders.

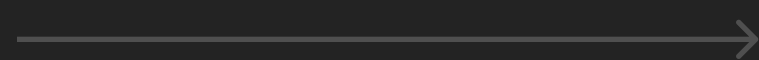


The driver's health does not pose any unwanted risks to customers

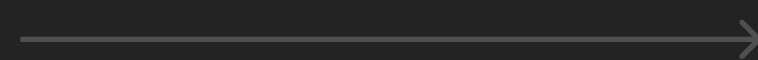


IMPORTANT

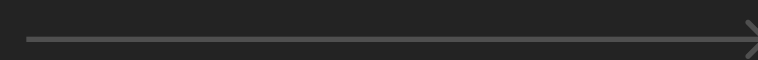
CONDITIONS OF CUSTOMER SERVICE



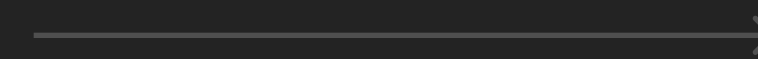
Track aircraft arrivals and train arrivals, and arrive 5-10 minutes in advance



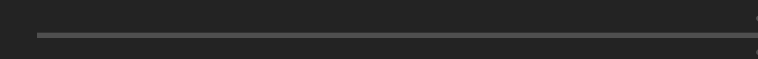
Meeting with a sign at the request of the order or by "call with the client"



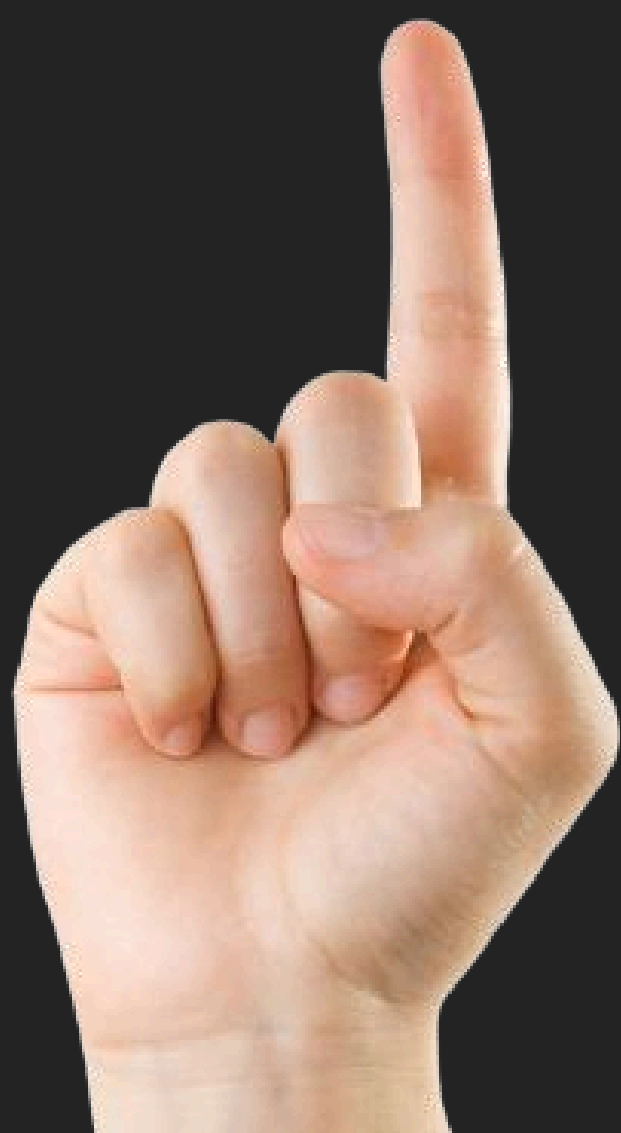
Mandatory assistance with baggage loading. Transportation of luggage to a passenger car at the request of the client



Free waiting at the airport is 40-60 minutes



Free waiting at the railway station for 20 minutes





IMPORTANT

CONDITIONS OF CUSTOMER SERVICE



Free waiting at the hotel or at the address 20 minutes



Immediate notification of the RU-TRAVEL operator if the client cannot get through within 15 minutes or any other circumstances affecting the route, the duration of the transfer or its cost



No smoking when serving



Neat and safe driving



Driver's appearance in classic clothing style



IMPORTANT TRANSPORTATION REQUIREMENTS

We perfectly understand the specifics of service and always set a high level of service at all stages of order support and services.



01

Passenger cars without stickers, advertisements, checkers, symbols of belonging to a taxi (unless otherwise specified in the order for travel on designated road sections) no older than 3-5 years

02

Availability of permits for the carriage of passengers and compliance with the norms established in the laws in the country of service and the requirements for technical inspection, insurance

03

Provision of buses not older than 10 years

04

Provision of minibuses, minivans not older than 8 years

05

Clean interior (free of foreign odors, things and objects) and clean body (according to weather conditions) without external damage and glass cracks

06

Provision of child seats or restraints by prior agreement.



IMPORTANT

SUPPLIER LIABILITY REQUIREMENTS

In case of identification and confirmation of violation of the quality standards of the services provided, you are ready to provide, by agreement:



Free service of a similar cost



Compensation for the cost of services performed with a comment



Performing the next service with a car of a higher class



Failure to pay for services or refund if the service was paid earlier.





RESPONSIBILITY = COOPERATION

We regularly work to improve service and conduct surveys of our customers about the observance of quality standards by road transport service providers. Thus, we contribute to the development of strong relationships with business partners.

For our part, we guarantee competitive conditions for cooperation, timely payment for your services, a high degree of automation of business processes by providing access to the personal account of the transport supplier.

Dear partner, your positive reputation and excellent performance of obligations are the key to long-term and mutually beneficial cooperation.

Best regards, RU-TRAVEL company.

Send the details of your organization to corp@ru-travel.org
or call us at +78002004017 +74951283601.
A specialist will contact you as soon as possible and tell you more about the details
and adaptation in working with us





TO CONTACT US

CONTACTS



RUSTRANSFER LLC
TIN: 2367007357
IEC: 236601001
PSRN: 1192375006515

Legal and actual address:
354000, Krasnodar Territory, Sochi,
Gorkogo street 26, office 18

For postal correspondence:
354000, Krasnodar Territory, Sochi, PO Box 600



MOSCOW BRANCH
JSC CB "MODULBANK"
BIK: 044525092
Correspondent account number:
30101810645250000092
Account number: 40702810570010125521



- +7 (495) 128 3601 Moscow
- +7 (812) 603 7550 St. Petersburg
- +7 (843) 207 0209 Kazan
- +7 (862) 279 2425 Sochi
- +1 (202) 350 2717 Washington
- +7 (923) 500 8282
- +7 (923) 500 4343
- 24@rustransfer.org
- www.rustransfer.org